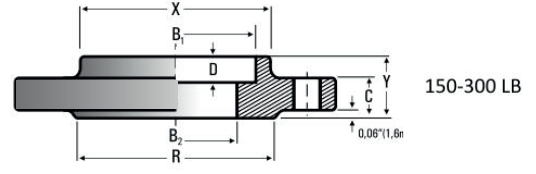
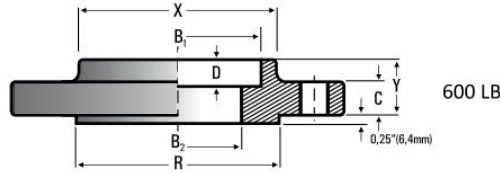
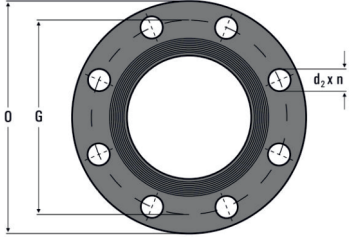


# Socket Welded 150-300-600

ASME B 16.5-1996



150 LB													
PIPE		O	Cmin	R	DRILLINGS			B1	X	Y	B <sub>2</sub>	D	WEIGHT[kg]
DN	NPS				n	G	d2						
ASME B16.5-1996													
15	1/2"	89	11.2	34.9	4	60.3	15.8	22.4	30	16	Changes Customer upon Request	10	0.8
20	3/4"	99	12.7	42.9	4	69.8	15.8	27.7	38	16		11	0.9
25	1"	108	14.3	50.8	4	79.4	15.8	34.5	49	17		13	1
32	1 1/4"	117	15.7	63.5	4	88.9	15.8	43.2	59	21		14	1.3
40	1 1/2"	127	17.5	73	4	98.4	15.8	49.5	65	22		16	1.4
50	2"	152	19.1	92.1	4	120.6	19	62	78	25		17	2.3
65	2 1/2"	178	22.3	104.8	4	139.7	19	74.7	90	29		19	3
80	3"	190	23.9	127	4	152.4	19	90.7	108	30		21	3.5

300 LB													
PIPE		O	Cmin	R	DRILLINGS			B1	X	Y	B <sub>2</sub>	D	WEIGHT[kg]
DN	NPS				n	G	d2						
ASME B16.5-1996													
15	1/2"	95	14.2	34.9	4	66.7	15.8	22.4	38	22	Changes Customer upon Request	10	1.2
20	3/4"	117	15.7	42.9	4	82.6	19	27.7	48	25		11	1.3
25	1"	124	17.5	50.8	4	88.9	19	34.5	54	27		13	1.4
32	1 1/4"	133	19	63.5	4	98.4	19	43.2	63	27		14	1.8
40	1 1/2"	156	20.6	73	4	114.3	22.2	49.5	70	30		16	2.5
50	2"	165	22.4	92.1	8	127	19	62	84	33		17	3
65	2 1/2"	190	25.4	104.8	8	149.2	22.2	74.7	100	38		19	4.5
80	3"	210	28.4	127	8	168.3	22.2	90.7	117	43		21	6

600 LB													
PIPE		O	Cmin	R	DRILLINGS			B1	X	Y	B <sub>2</sub>	D	WEIGHT[kg]
DN	NPS				n	G	d2						
ASME B16.5-1996													
15	1/2"	95	14.2	34.9	4	66.7	15.8	22.4	38	22	Changes Customer upon Request	10	1.3
20	3/4"	117	15.7	42.9	4	82.6	19	27.7	48	25		11	1.4
25	1"	124	17.5	50.8	4	88.9	19	34.5	54	27		13	1.8
32	1 1/4"	133	20.6	63.5	4	98.4	19	43.2	64	29		14	2.6
40	1 1/2"	156	22.4	73	4	114.3	22.2	49.5	70	32		16	3.1
50	2"	165	25.4	92.1	8	127	19	62	84	37		17	4
65	2 1/2"	190	28.4	104.8	8	149.2	22.2	74.7	100	41		19	5.5
80	3"	210	31.8	127	8	168.3	22.2	90.7	118	46		21	7

Dimensions are in mm.